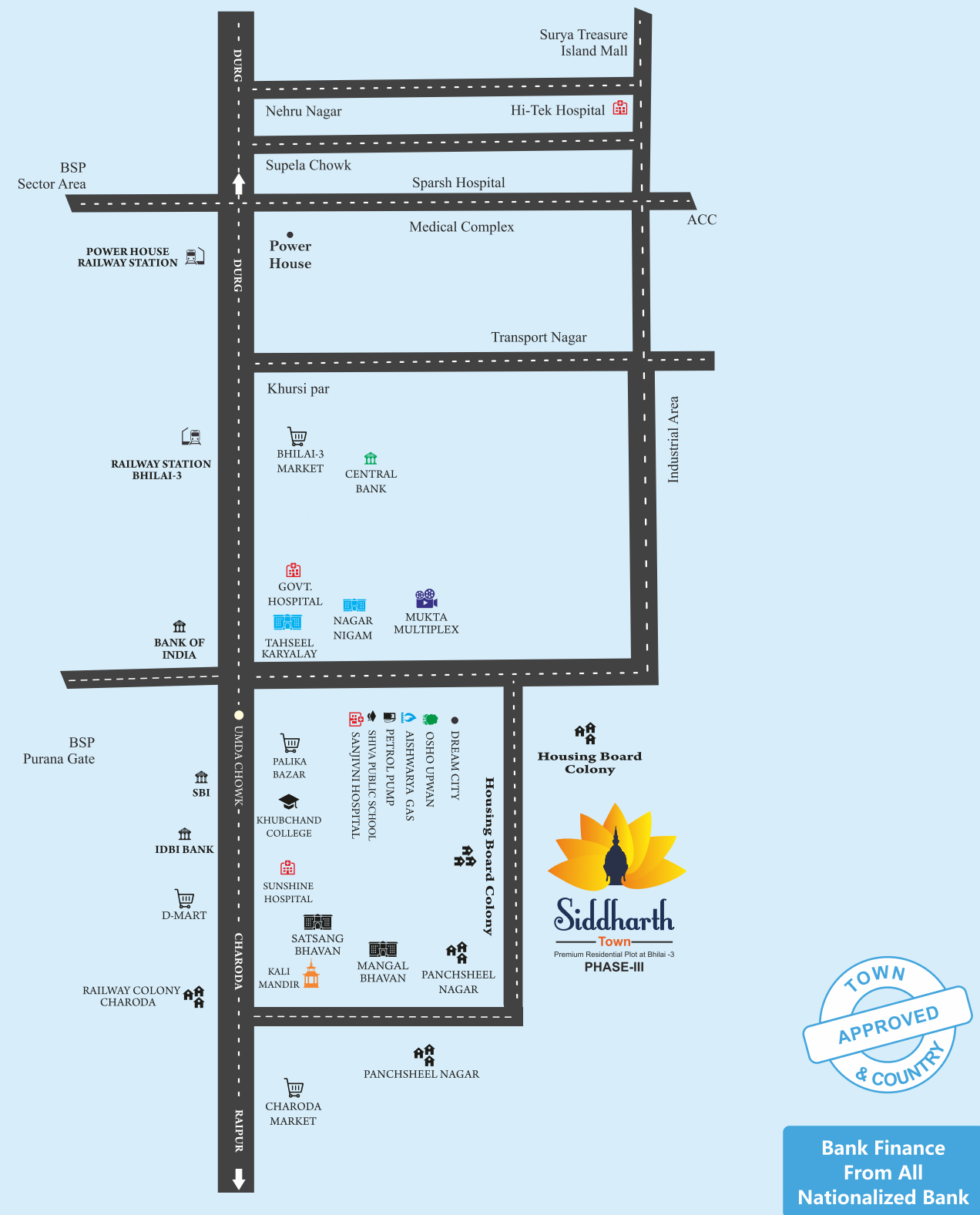
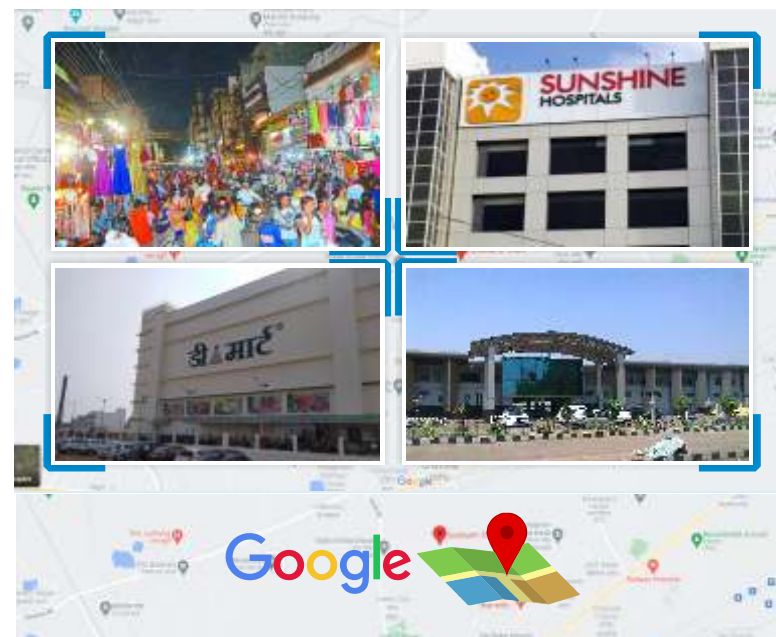


## Location Map



### Distance From Various Landmarks:

D-MART	5 Min.	Railway Hospital	5 Min.
Housing Board Colony	0 Min.	Sunshine Hospital	5 Min.
Palika Bazar	5 Min.	Khubchand College	5 Min.
Railway Colony Gharonda	5 Min.	Kali Mandir	5 Min.
Charoda Market	5 Min.	Bhilai Railway Station	10 Min.
Mukta Multiplex	3 Min.	Sanjivni Hospital	3 Min.



A Project by:



**Office & Site Address:**  
Charoda, Umda Road, Near  
Pansheel Nagar, Bhilai-3, (C.G.)

Architects  
**Jagat Lakra & Associates**  
Architects | Planners | Interior Designers

MEMBER OF  
**CREDAI**  
Chhattisgarh

For Bookings Contact: **6262301919**

Disclaimer- This brochure is purely conceptual & not a legal offering. All visual photographs used in this brochure are artists impressions. All specifications, sizes & layout etc. are tentative & subject to such variations, additions, modifications as decided by the Architects or by the Promoters.

www.siddharthbuildcon.com

## THE HOUSE OF SIDDHARTH TOWN PHASE-3 New Generation Land



*What is the price of Happiness ?*

PCGRERA271021001288 | [www.rera.cgstate.gov.in](http://www.rera.cgstate.gov.in)





”

A Decade of customer satisfaction & service to the mankind. We do what we say, therefore our moto is Real for Everyone “Turning dream in to the reality”. Our core ideology “To create place of solace for homo sapiens”

genie which says “your wish is my command “, Yes we are here to understand the customer needs & requirements for housing. Giving new dimension with material (turn key) form of construction.



At Bhardwaj Promoter & Builders hundreds of families have found their housing solution and Peace in mind. Bhardwaj Promoters & Builders have been a synonyms of prosperity in Chhattisgarh located in the cities such as Raipur, Kumhari and Bhilai. We have built a concept “Touches Raipur feels Bhilai” for our most successful project Siddharth Town Phase-III situated in NH-6 Kumhari between the Raipur and Bhilai, where 500+ families are living happily under this we project to Sai Chaya, Sai Kutir, Sai Shrishti and other projects like Sai Ashish, Sarvodaya Greens and most premium project Sai Villas and Apartments, these are situated in NH-6 Kumhari between the Raipur and Bhilai.

Bhardwaj Group recently launched Bhardwaj Sky. Bhardwaj Sky is a premium residential society encompassing, all 2 & 3 BHK luxury apartments. The campus is situated in most prime location at heart of the city Shankar Nagar Raipur.

Bhardwaj Group has peaked to heights of quality and innovation. The designs are complimented with the principals of VASTU and most important is given a comfort living. Bhardwaj Promoters & Builders have won so many awards with the concept of Affordable Housing Segment in Chhattisgarh, Best Builder in Bhilai etc. .

Then we have projected to Siddharth Buildcon at Bhilai-3 with concept of “High Life in Low Cost” with the all modern amenities. Bhardwaj Group have came with construction



# THE PROMISE OF New Generation Land ONLY BY THE HOUSE OF SIDDHARTH TOWN PHASE-3

New Generation  
Land **is Secure**



100% safe and  
secure physical  
possession.

New Generation  
Land **is Liquid**



Emergency  
liquidation promise.

New Generation  
Land **is  
Transparent**



100% money back  
before registration\*.

New Generation  
Land **is Wealth**



Assured resale with  
capital protection,  
once in your  
consumer cycle\*.



0% risk, price  
protection through  
Best Value  
Assurance\*.



100% legitimate  
water-tight  
documentation and  
legal verification.

## NEW GENERATION LAND IS SAFE AND SECURE



## THE HOUSE OF SIDDHARTH TOWN PHASE-3

### New Generation Land

Born out of a vision to democratize land in the country, The House of Siddharth Town Phase-3 is a New Generation Developer whose aim is to make land a core part of investment in India.

## Why invest in Land now?

Land is an asset upon which legacies are built. But laying its foundation lays stuck in outdated processes. We're here to change the way the new generation of India can make this dream come true, with New Generation Land.



### The promise of security

We deliver 100% legitimate safe and secure physical possession at 0% risk, with price protection and Best Value Assurance.



### The promise of liquidity

We commit to an emergency liquidation promise as well as provide an entirely digitally-enabled resale of New Generational Land.



### The promise of transparency

We offer 100% money back before registration and 100% legitimate water-tight documentation and legal verification.



### The promise of wealth

We help build long-term intergenerational wealth with Capital Protection for assured resale, digital liquidation and swapping of assets .







Happiness is a heavenly feeling,  
experience it in every bit of life









## AMENITIES

- 24x7 Security Guard.
- Covered Drainage Ensures Hygiene.
- 40 Feet Wide Well Built and Maintained Concrete Road & Adequate Street Light Better Visibility at all Times.
- Over Head Tank Water Supply System.
- Grand Entrance to the Colony with the 7 Feet Height Boundary wall to Ensure Security of the Highest Standards.
- 07 Well Planned and Landscaped garden.
- Fountain.
- Children .Play Area where Kids can have their Best Time.
- CCTV Camera on Entrance Gate to Keep End Eye of Security.
- Separate Transformer for Plot & Bungalow.
- Green Plantation along Side Road for Fresh Air.
- Water Harvesting System.
- Walking Track.
- Garden Facing Plots.
- Lawn Tennis, Cricket Net Basketball and Badminton Court, Open Gym.
- Boom Barrier Security System.



**Siddharth**  
Town  
Premium Residential Plot at Bhilai -3  
**PHASE-III**



Concrete  
Drains



Overhead  
Water Tank



Parks & Play  
Grounds



Spiritual  
Centre



Street  
Lights



Concrete  
Roads



Avenue  
Trees



Secure Gated  
Entry & Exit



Rainwater  
Harvesting